

ACME-PWS

Highly Configurable, Rugged Portable Warning System



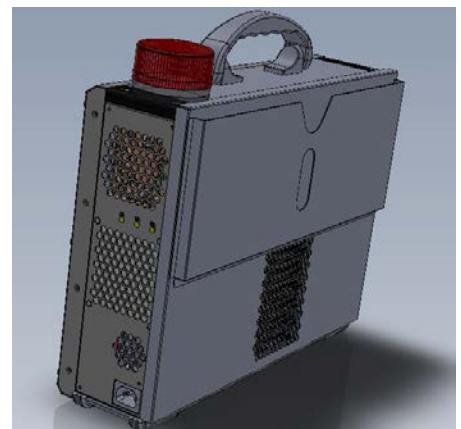
The ideal cost-effective, highly versatile Portable solution.

The PWS product is a robust portable computer that is built using all aluminum sheet metal to provide tough, go-anywhere unit suitable for tough environments and mobile applications. Optional touch screen allows PWS to operate without keyboard and makes the system smaller and lighter than our standard unit.

For better protection from the environment, the LCD screen of the PWS is guarded with a specially treated anti-glare tempered glass. With its simplistic design and rugged construction, the PWS is the most economic, durable, and versatile portable platform for your applications.

Technical Specifications

Model	ACME-PWS
Processor	Intel® Core™ 3rd generation 3.0GHz Quad-Core Desktop Processor
Memory	4GB-DDR3, 1600MHZ
Graphic	On-board Graphic with VGA up to 1920x1080 17.3" Touch Screen
HDD	1 x 128GB SSD, SATAII 3Gb/s, max. up to 1TB available
Data Acquisition	4-CH Relay Output Module
IOs	4 x SATS II ,2 x RS232 ,6 x USB 2.0 port(s)
LAN	2x 1 Gigabit LAN ports
Audio	Line in/ out / Mic
Power source input	250W 110~220VAC
Dimension	H x W X D 315mm x 418mm x 136mm
MTBF/MTTR	50,000 HRs / 90 Mins



Patent	Alarm Emergency Flash
Operating System	Microsoft windows XP 32bits
EMP	1.2x50μs, 10kV8x20μs, 5kA
EFT	4.5kV - 5x50ns EFT
Option	ANSI C63.4 EN 55022 Class A ITE, EN61000-3-2+A1+A2,
Test pass	EN 61000-3-3, EN55024:, EN61000-4-2, EN61000-4-3+A1, EN61000-4-4+A1, EN61000-4-5, EN61000-4-6, EN61000-4-8, EN61000-4-11
BSMI	CNS690-R43795

Environmental Specification

Operating Temp	-10°C ~ + 60°C
Storage Temp	-20°C ~ + 70°C
Heat and Humidity	10% ~ 90%
Shock	Operating : 10G, 11ms, Half-Sine Storage : 30G, 11ms, Half-Sine
Vibration	Operating : 0.4 Grms (10 to 500Hz) Storage : 1.12Grms(10 to 500Hz)
Compliance	CE, FCC, RoHS